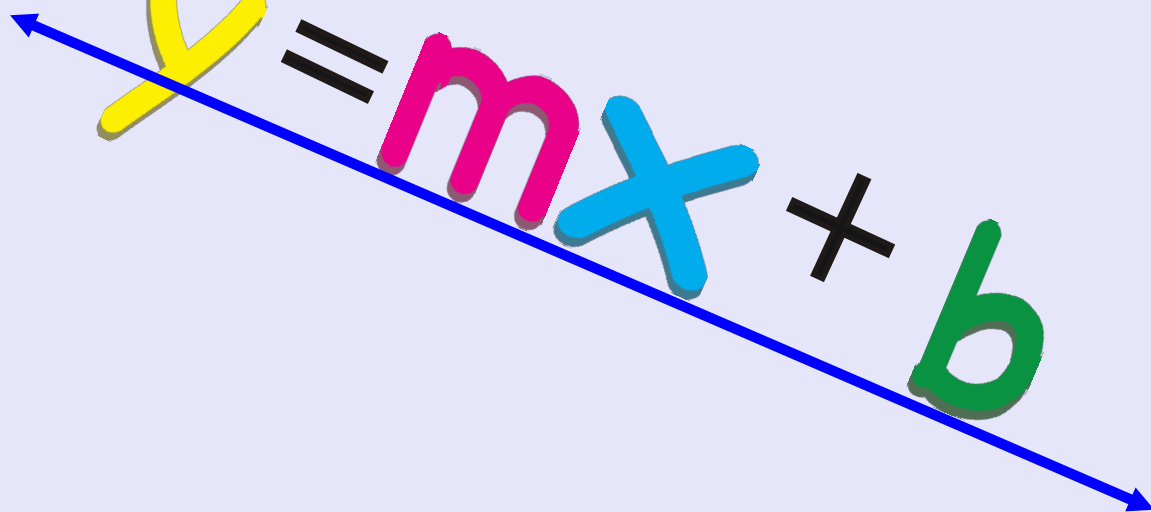


Writing Equations:  
Slope-intercept form

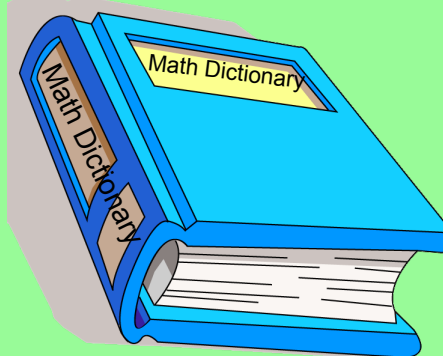

$$y = mx + b$$

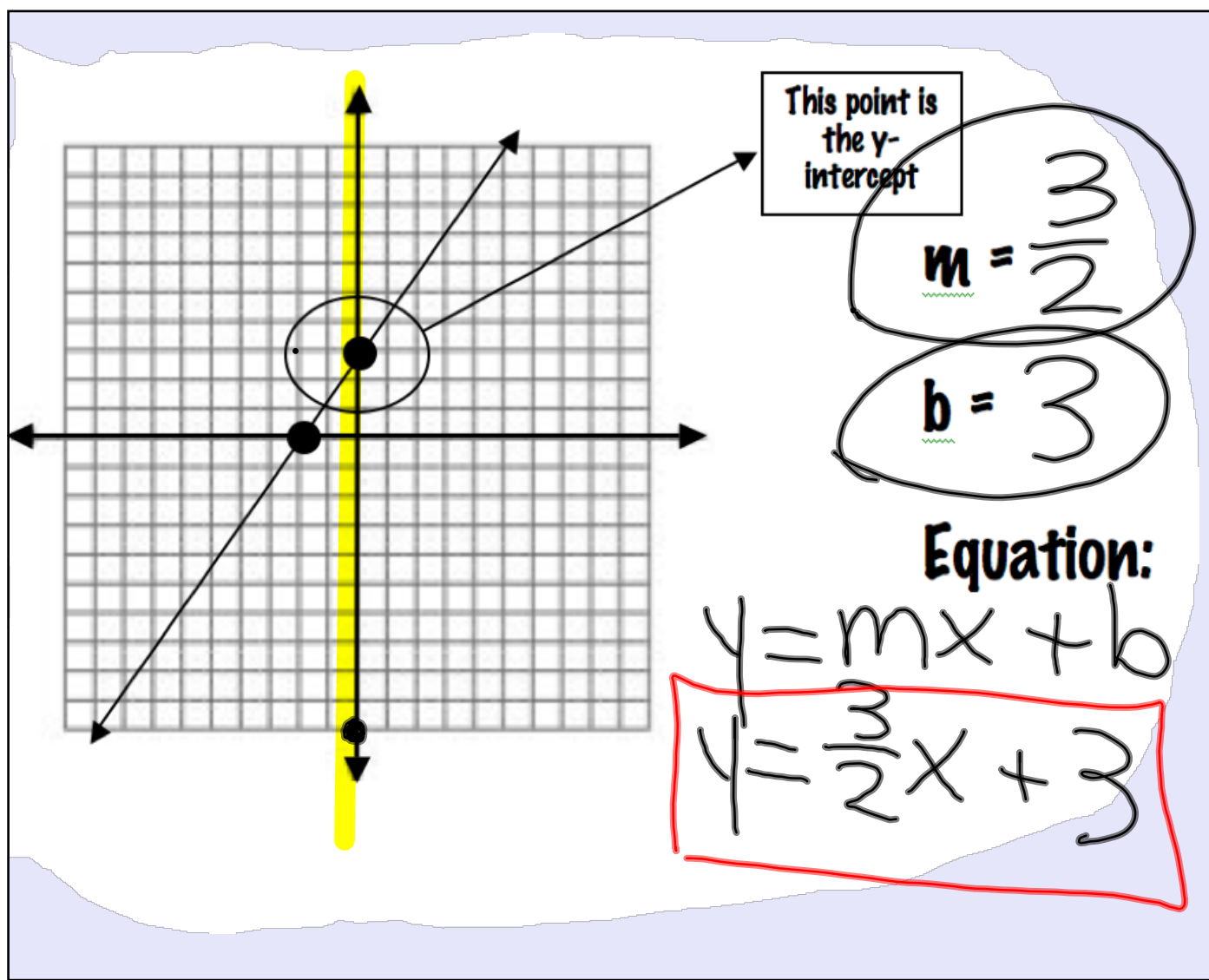
*Add to your Math Dictionary . . .*

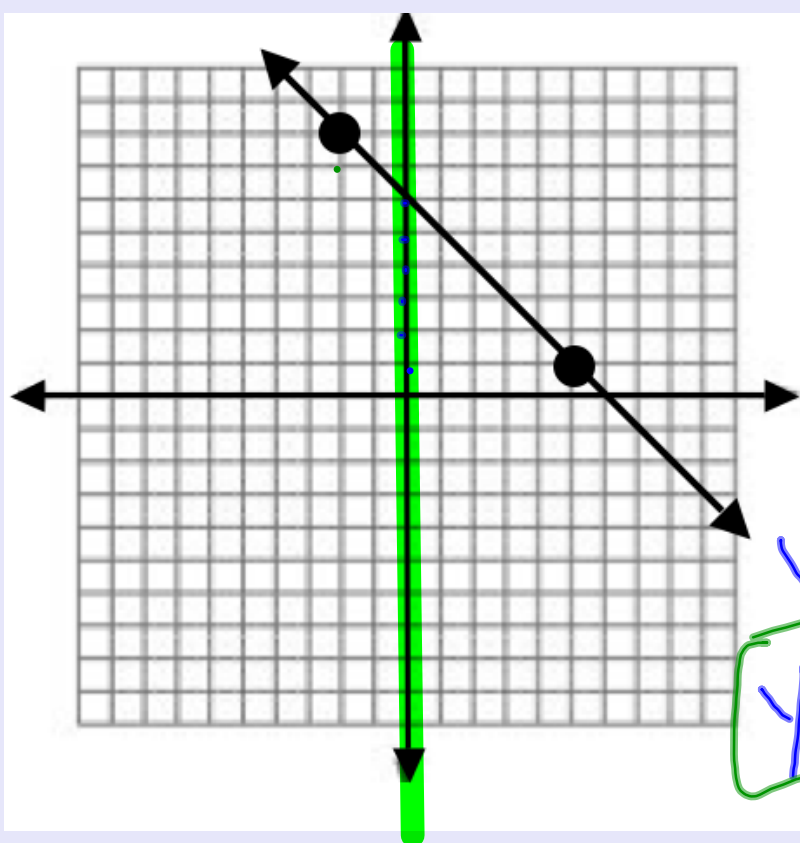
**Slope-Intercept Form:  $y = mx + b$**

$m$  is the slope  $\rightarrow \frac{\text{rise}}{\text{run}}$

$b$  is the  $y$ -intercept (point where the line crosses the  $y$ -axis)





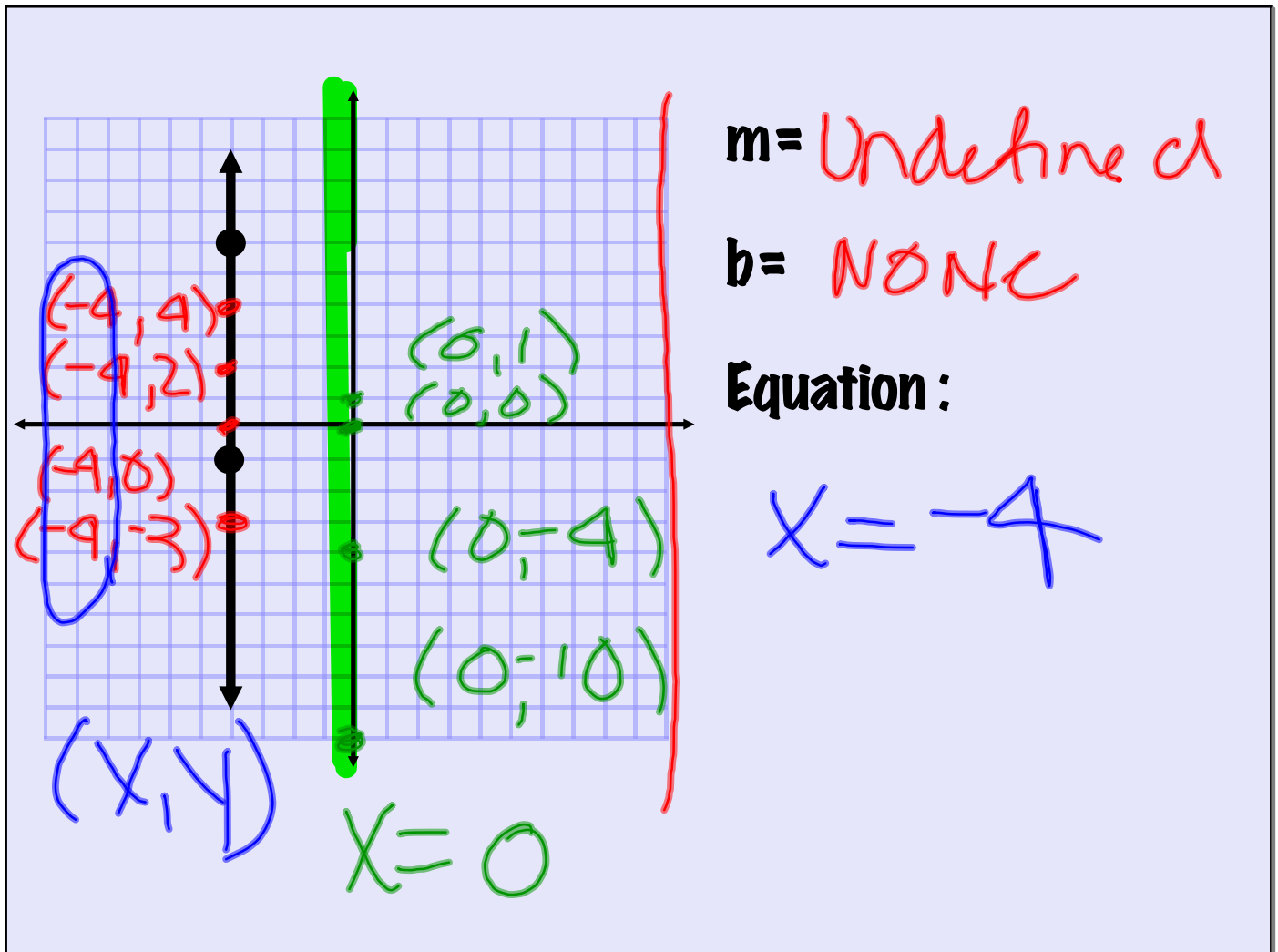


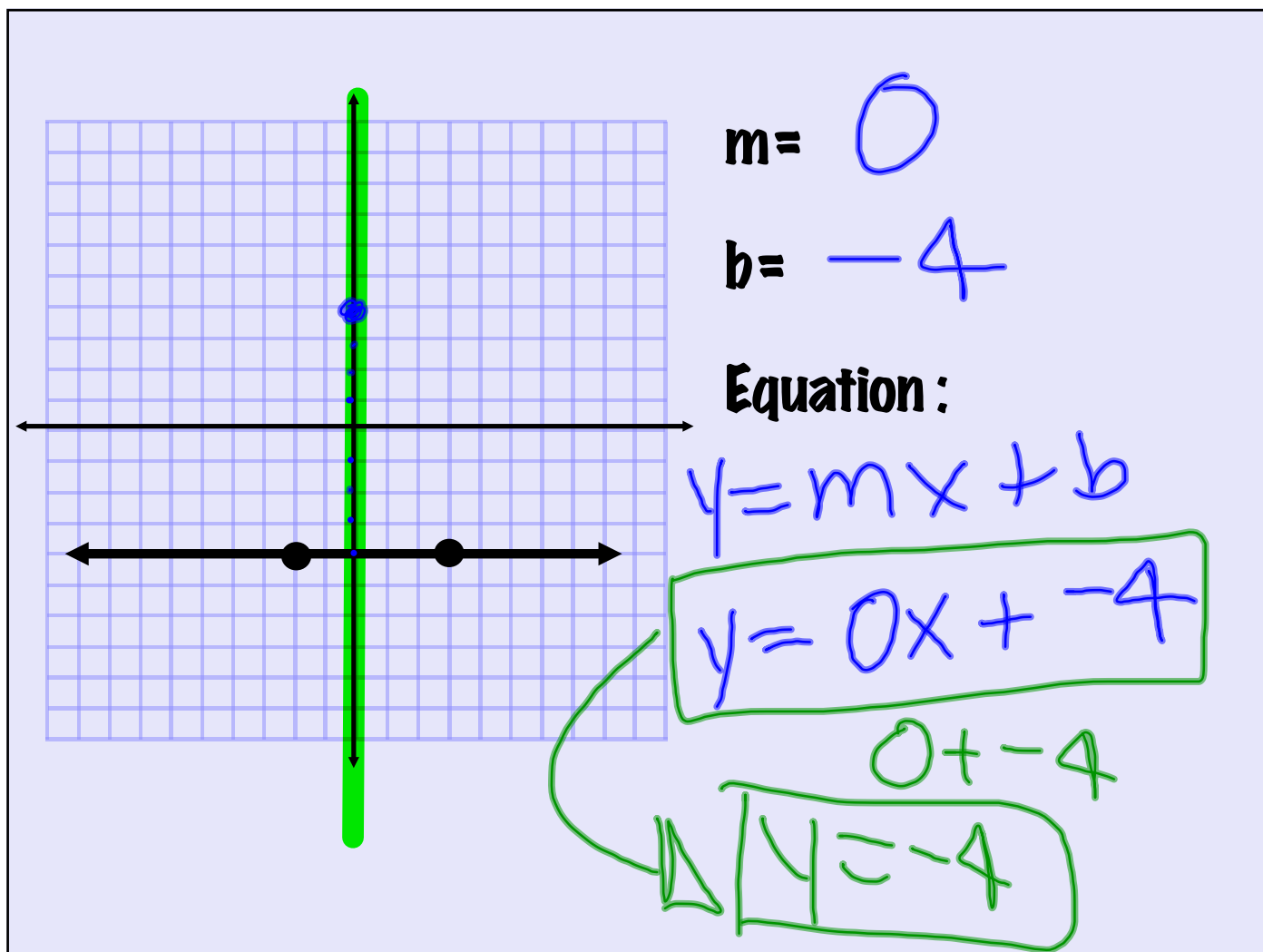
$$m = \frac{-1}{7}$$
$$b = 6$$

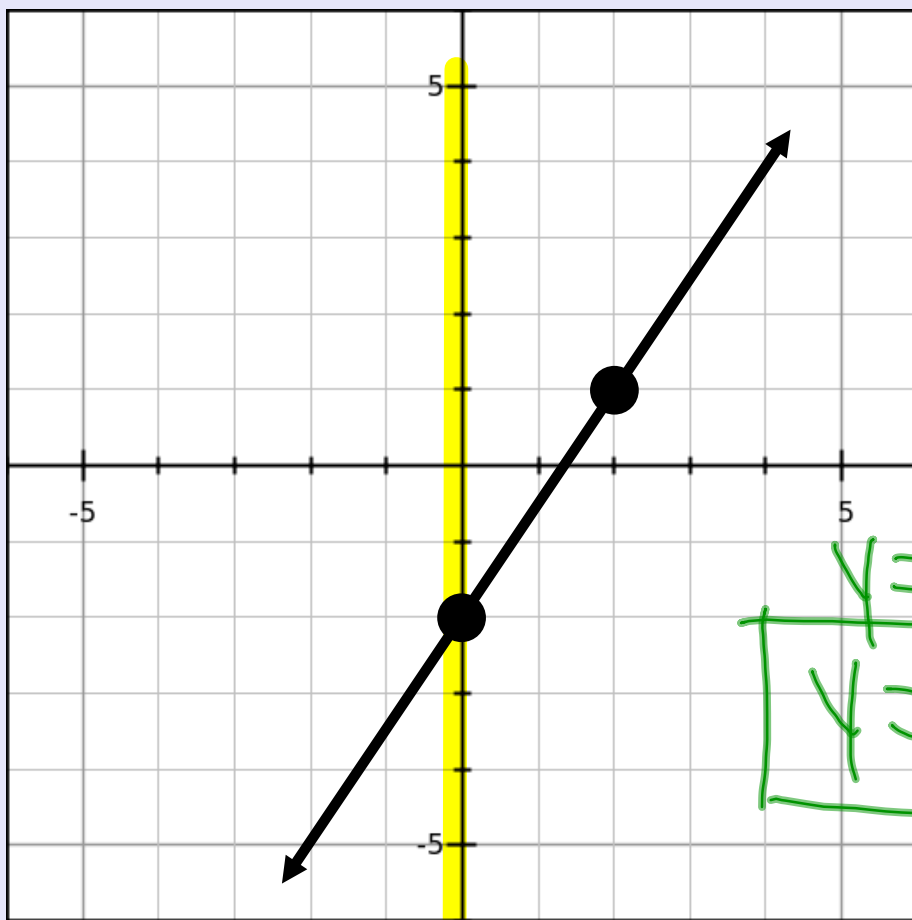
**Equation:**

$$y = mx + b$$

$$y = -\frac{1}{7}x + 6$$







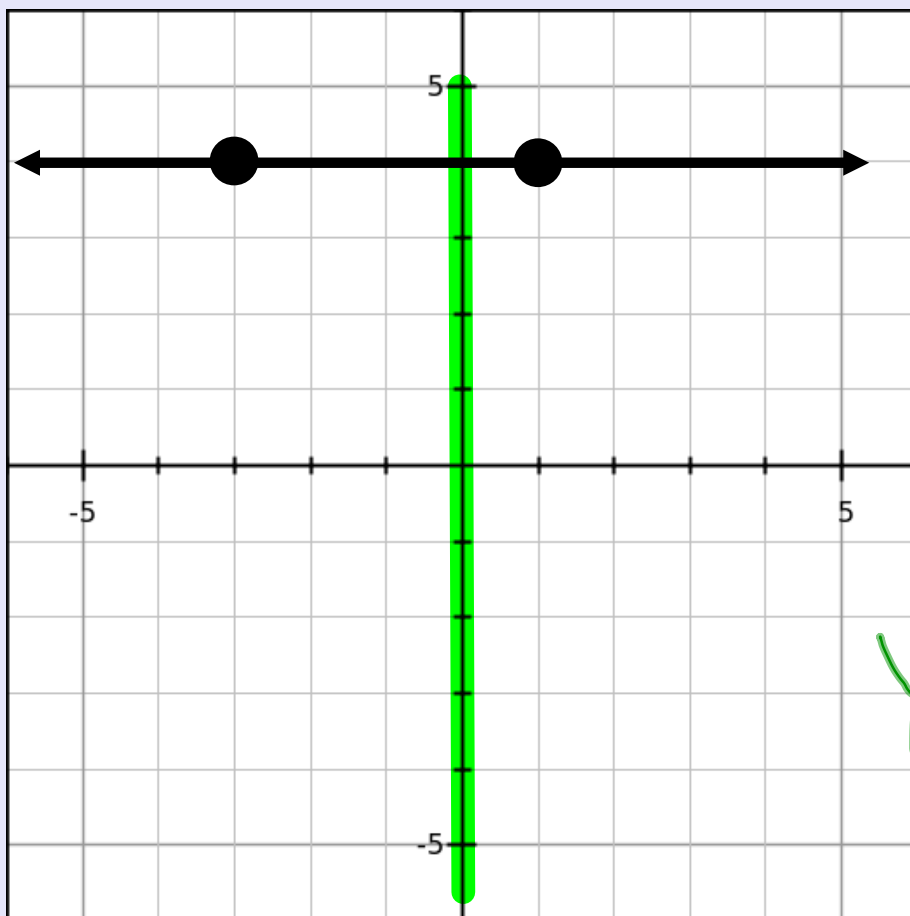
$$m = \frac{3}{2}$$

$$b = -2$$

equation:

$$y = mx + b$$

$$y = \frac{3}{2}x + -2$$



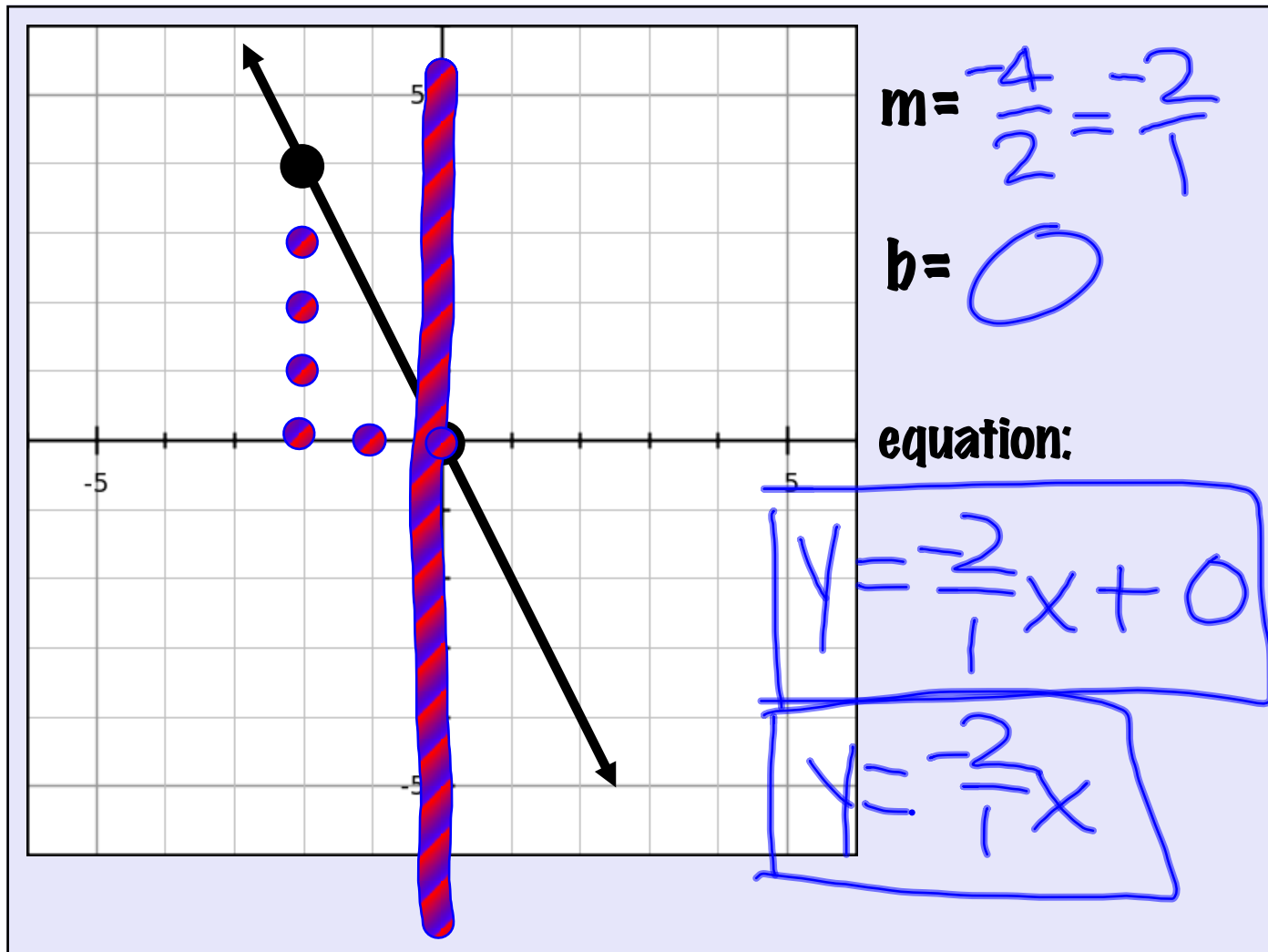
$m = 0$

$b = 4$

equation:

$y = 0x + 4$





# Planner Time

